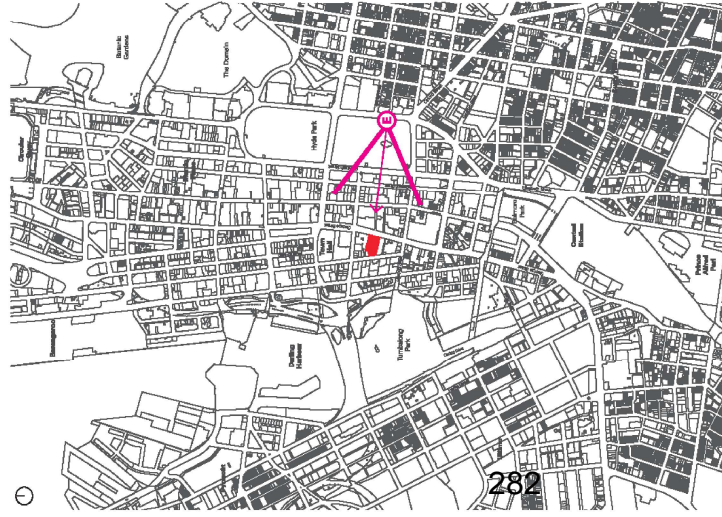


Attachment B6

Selected Drawings

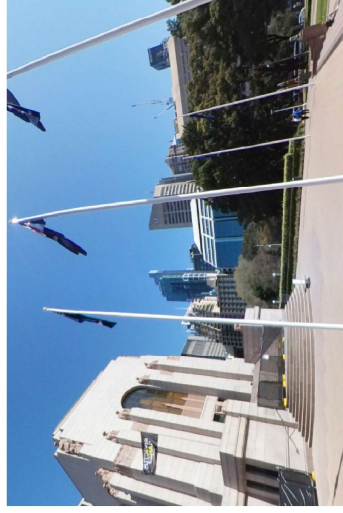
2 View Corridors

2.5 View E - Hyde Park South



Approved Envelope

Proposed Tower

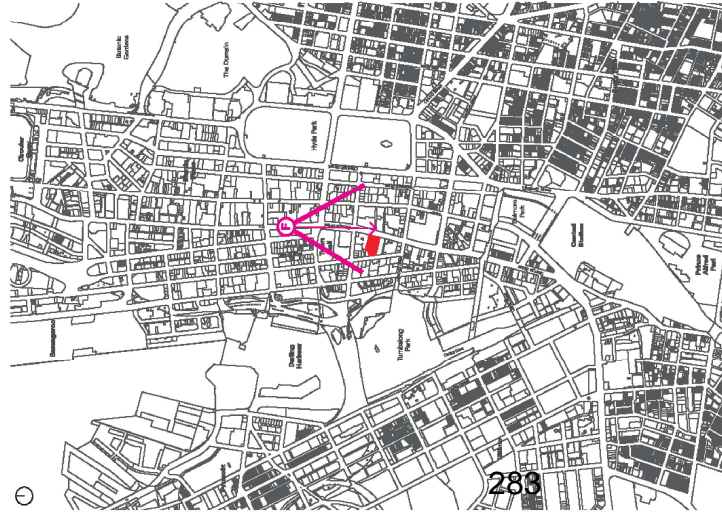


Photograph of surrounding context

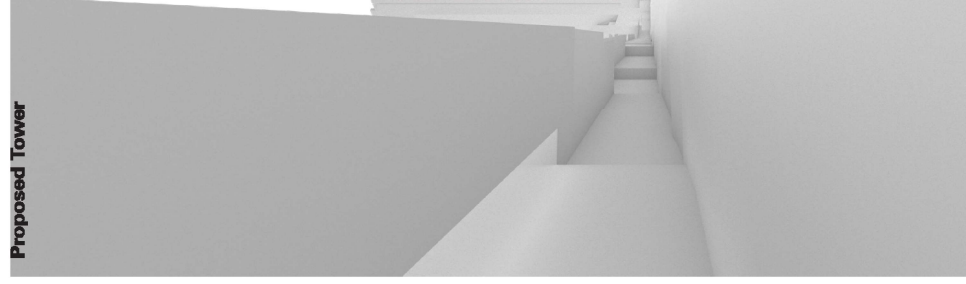
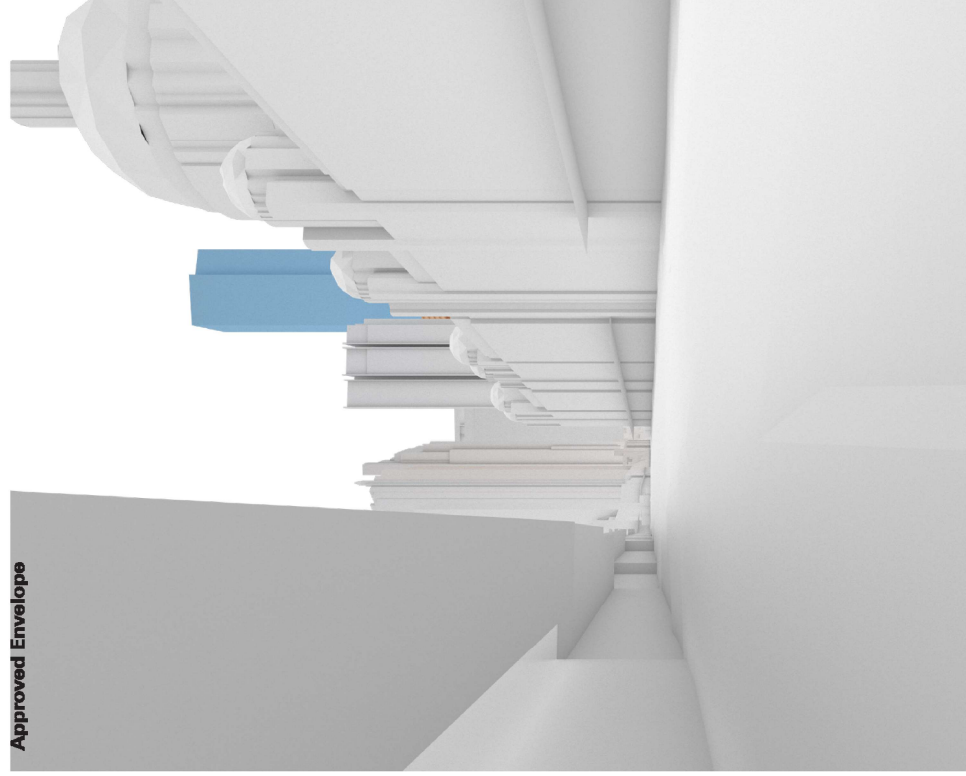
- Proposed development - DA
- Architectural roof feature
- Planning proposal - Approved envelope
- New buildings / envelopes

2 View Corridors

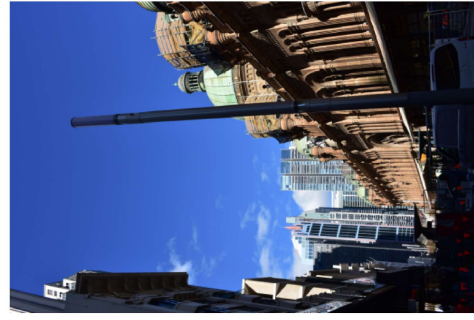
2.6 View F - George St, QVB



288



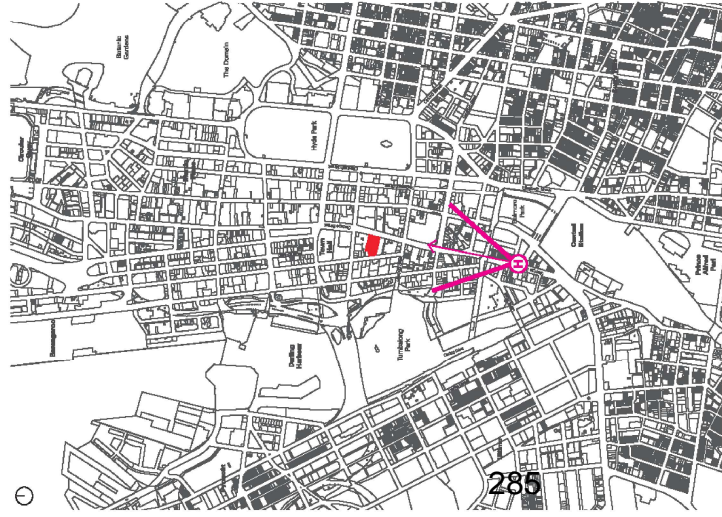
Photograph of surrounding context



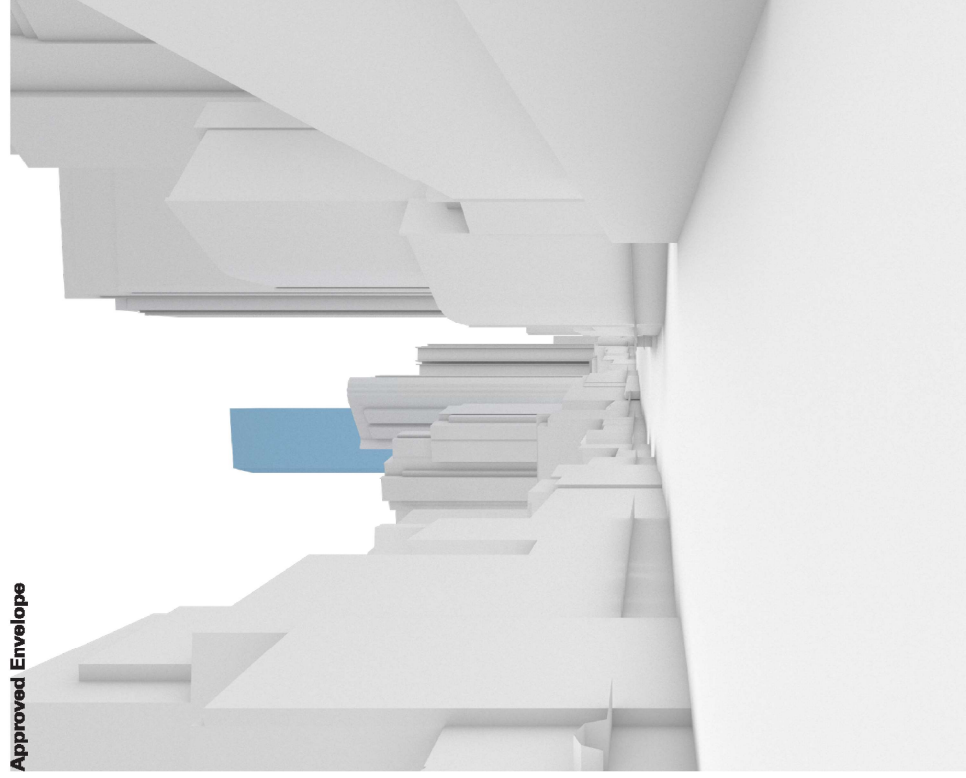
- Proposed development - DA
- Architectural roof feature
- Planning proposal - Approved envelope
- New buildings / envelopes

2 View Corridors

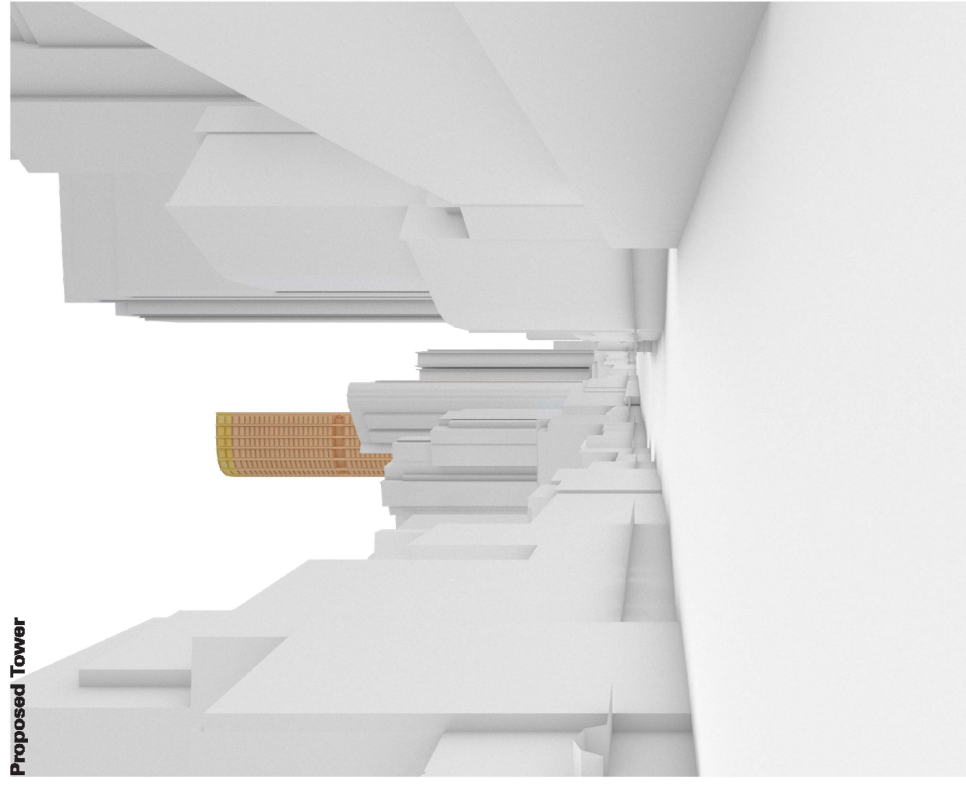
2.8 View H - George St, Capitol Square



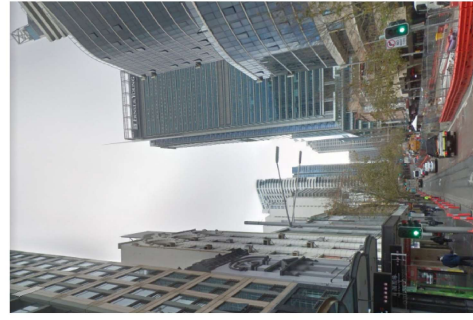
285



Approved Envelope



Proposed Tower

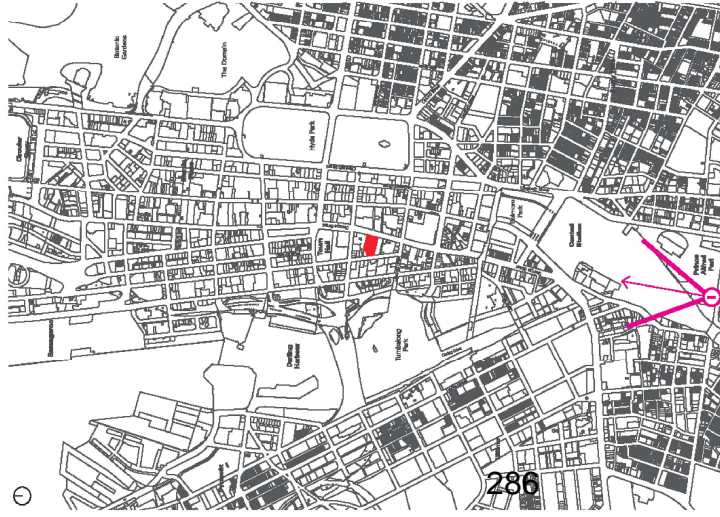


Photograph of surrounding context

- Proposed development - DA
- Architectural roof feature
- Planning proposal - Approved envelope
- New buildings / envelopes

2 View Corridors

2.9 View 1 - Prince Alfred Park

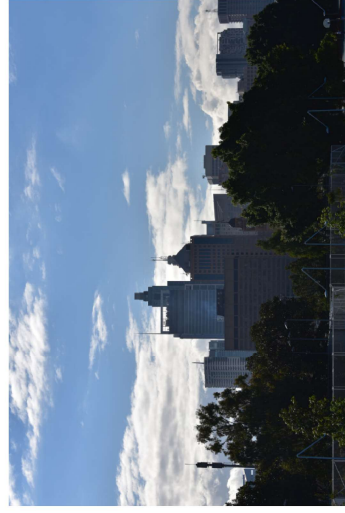


286

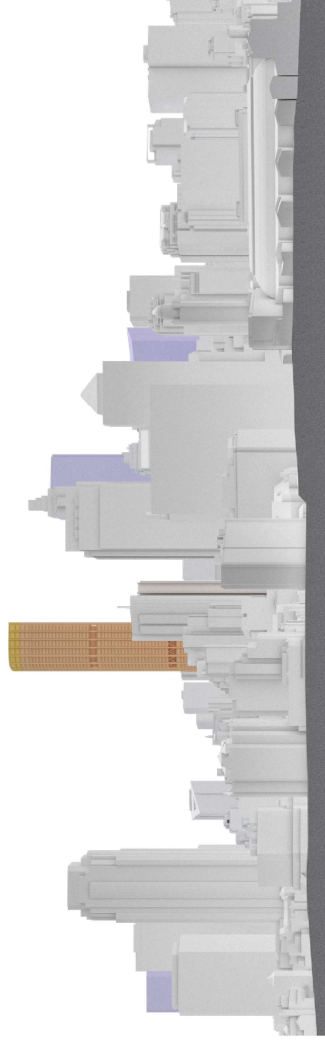
Approved Envelope



Proposed Tower



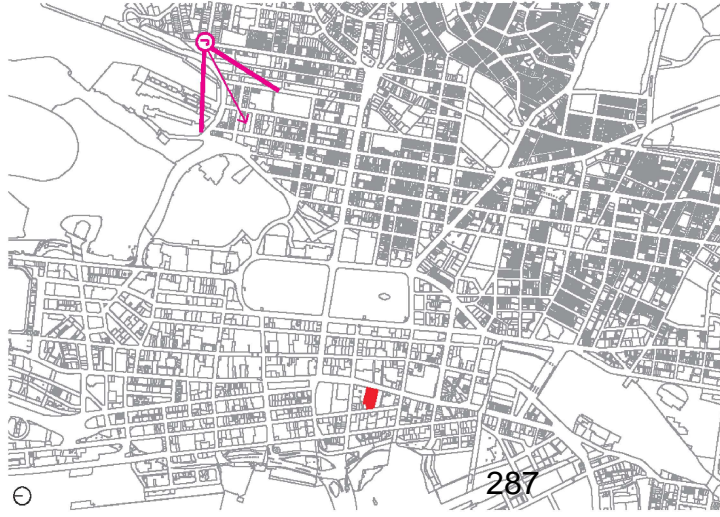
Photograph of surrounding context



- Proposed development - DA
- Architectural roof feature
- Planning proposal - Approved envelope
- New buildings / envelopes

2. View Corridors

2.10 View J - Embarkation Park



Approved Envelope



Proposed Tower

Photograph of surrounding context



- Proposed development - DA
- Reassessed development - DA
- Planning proposal - Approved envelope
- New buildings / envelopes

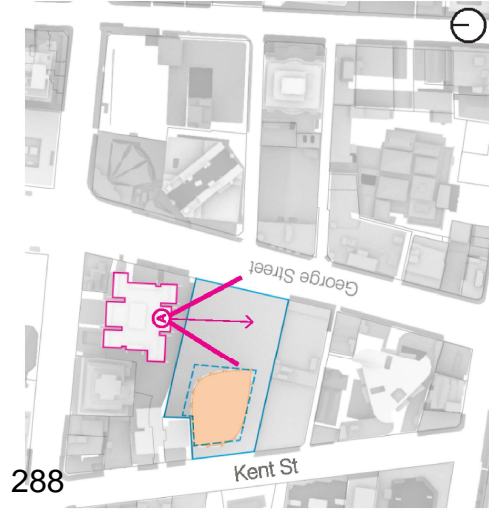
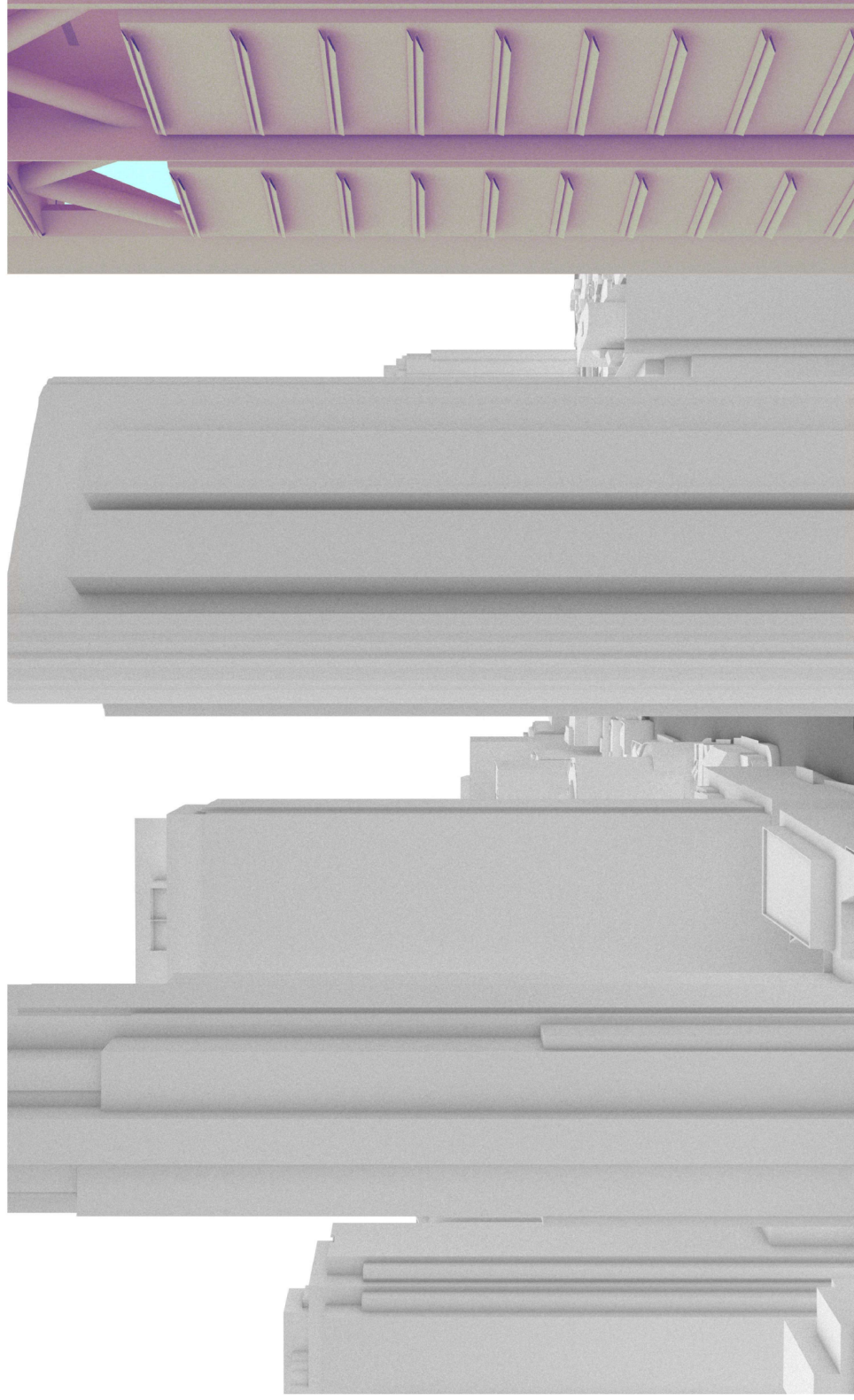
3 View Access Through Site

3.1 View A - Lumiere Apartments

View south from Lumiere @ RL122

The proposed building form does not further reduce view access to the south for the Lumiere Apartments compared to the approved envelope.

View is taken 100m above ground level for consistency with the approved planning proposal.



- Proposed development - DA
- Planning proposal - Approved envelope
- Building from which view is taken

- Proposed development - DA
- Overlay of approved envelope
- New buildings / envelopes

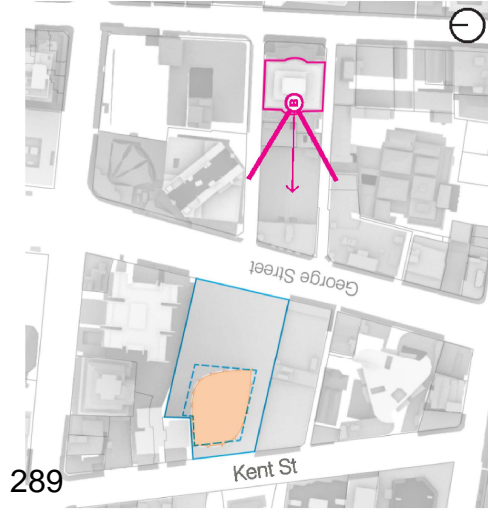
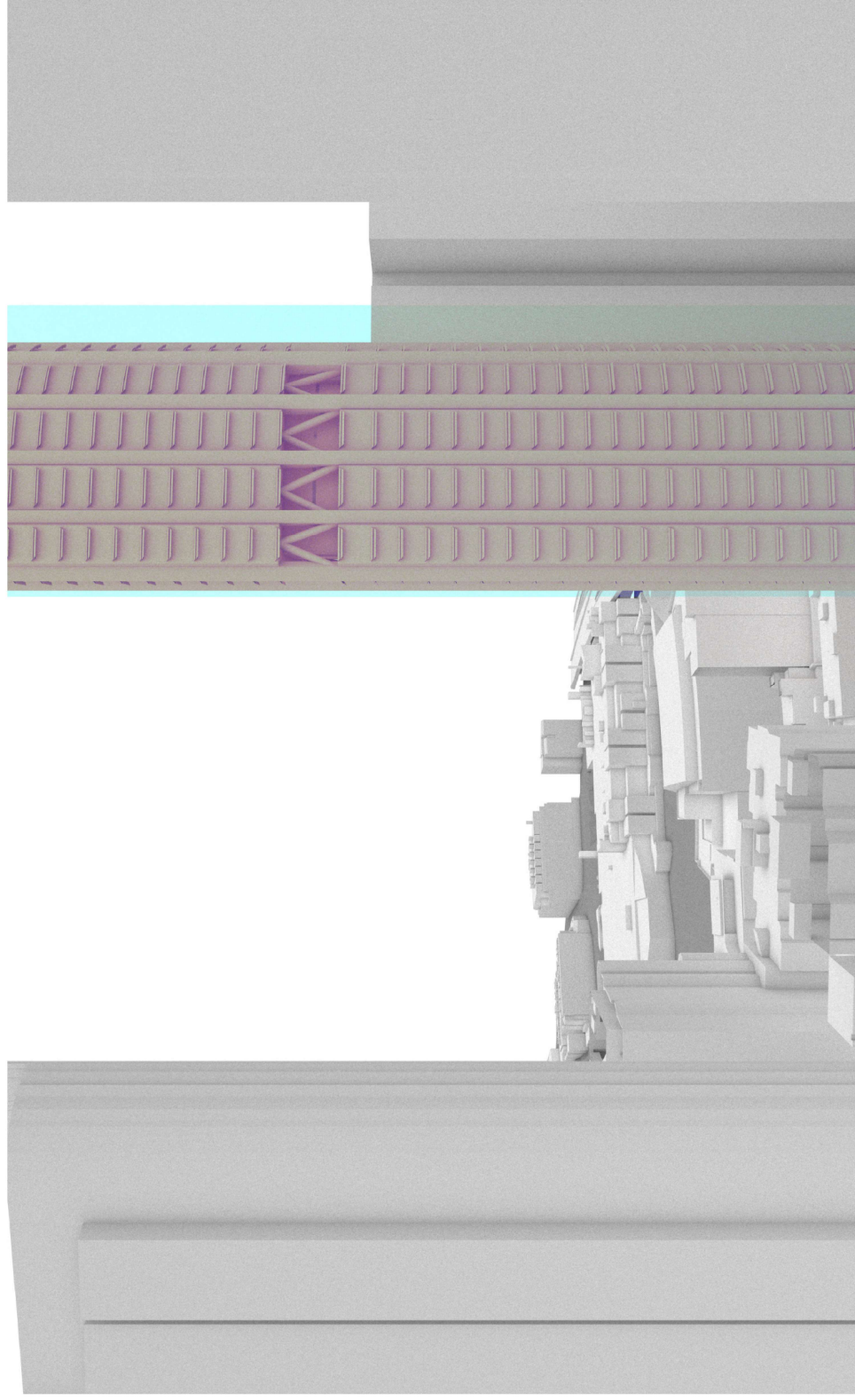
3 View Access Through Site

3.2 View B - Century Tower

View west from Century Tower @ RL122

The proposed building form improves view access to the west for Century Tower compared to the approved envelope. The curved footprint of the tower reduces width and visual mass.

View is taken 100m above ground level for consistency with the approved planning proposal.



- Proposed development - DA
- Planning proposal - Approved envelope
- Building from which view is taken

- Proposed development - DA
- Overlay of approved envelope
- New buildings / envelopes

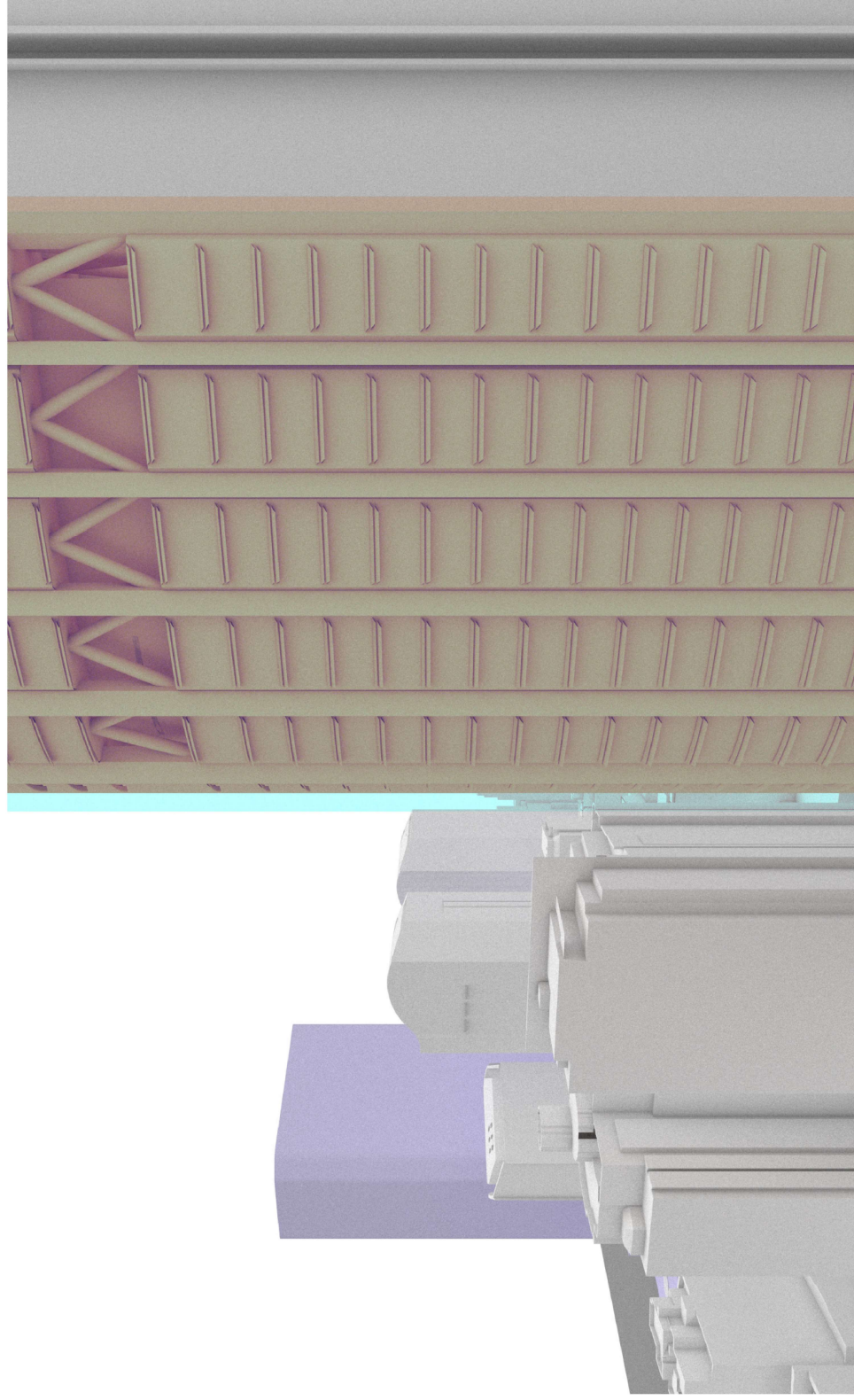
3 View Access Through Site

3.3 View C - From Meriton Tower

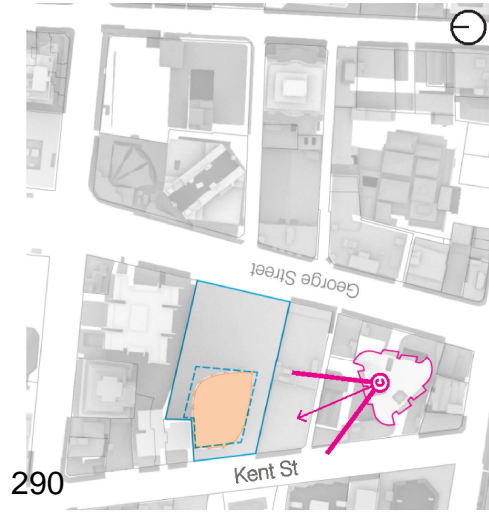
View north-west from Meriton Tower @ RL116

The proposed building form improves view access to the north-west for Century Tower compared to the Approved envelope. The curved footprint of the tower reduces width and visual mass.

View is taken 100m above ground level for consistency with the approved planning proposal.



Proposed development - DA
Overlay of approved envelope
New buildings / envelopes



Proposed development - DA
Planning proposal - Approved envelope
Building from which view is taken